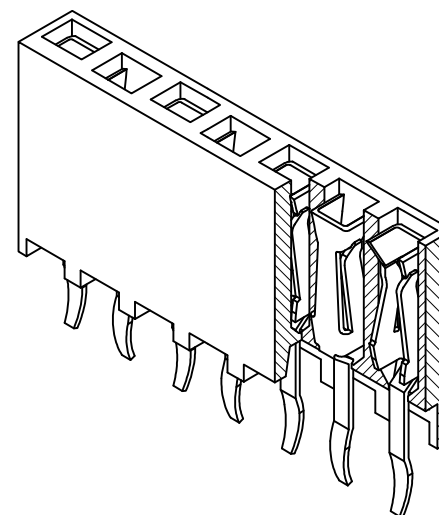
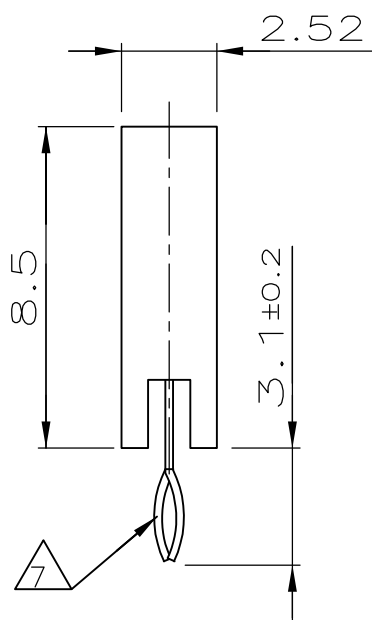
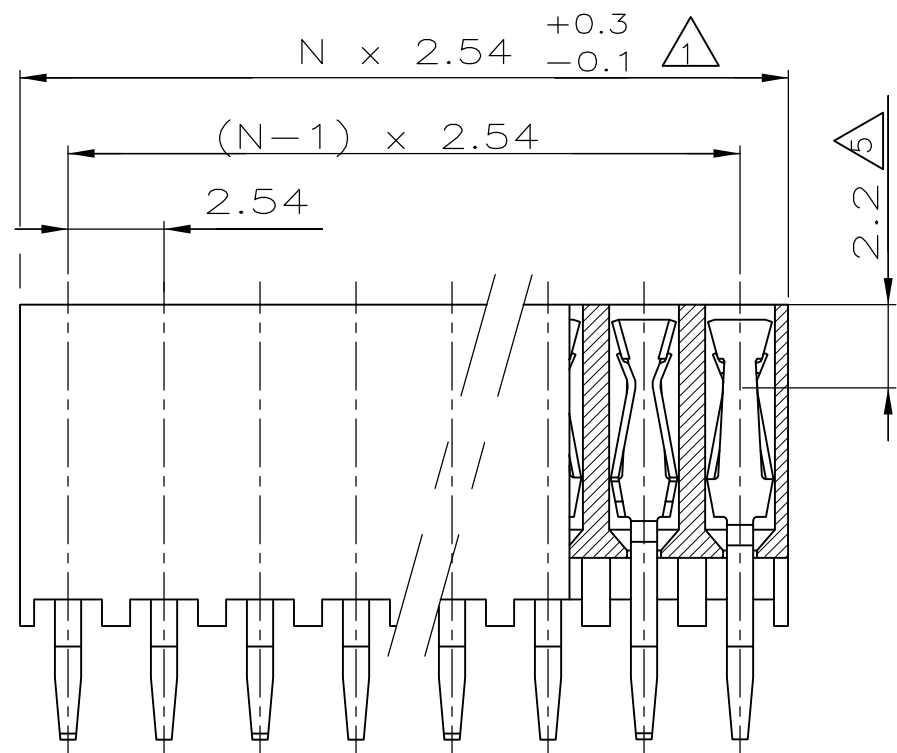
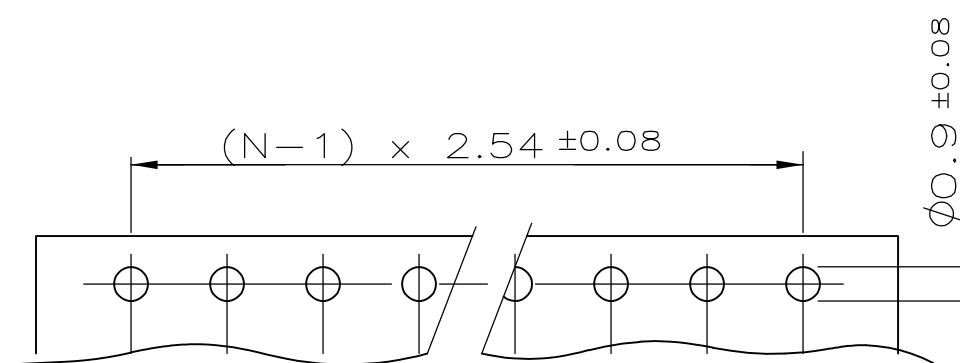
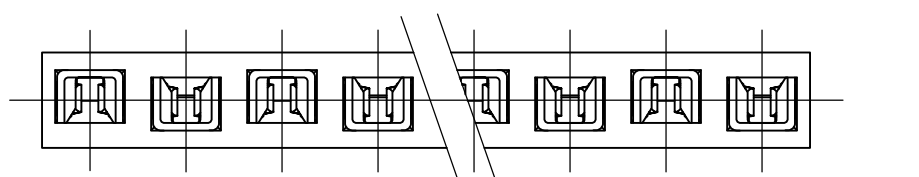


THIS DRAWING IS UNPUBLISHED. RELEASED FOR PUBLICATION  
 © COPYRIGHT - By - ALL RIGHTS RESERVED.

| LOC | DIST | REVISIONS |     |                                |           |     |      |
|-----|------|-----------|-----|--------------------------------|-----------|-----|------|
|     |      | P         | LTR | DESCRIPTION                    | DATE      | DWN | APVD |
| -   | -    | D         |     | HOUSING RESIN MATERIAL CHANGED | 25DEC2013 | TJ  | JK   |



| POLZ. | L     | BESTELL-NR.  |
|-------|-------|--------------|
| -     | -     | -            |
| 2     | 5.08  | 215 299-2    |
| 3     | 7.62  | -3           |
| 4     | 10.16 | -4           |
| 5     | 12.70 | -5           |
| 6     | 15.24 | -6           |
| 7     | 17.78 | -7           |
| 8     | 20.32 | -8           |
| 9     | 22.86 | -9           |
| 10    | 25.40 | 1-           |
| 11    | 27.94 | 1-           |
| 12    | 30.48 | 1-           |
| 13    | 33.02 | 1-           |
| 14    | 35.56 | 1-           |
| 15    | 38.10 | 1-           |
| 16    | 40.64 | 1-           |
| 17    | 43.18 | 1-           |
| 18    | 45.72 | 1-           |
| 19    | 48.26 | 1-           |
| 20    | 50.80 | 2-           |
| 21    | 53.34 | 2-           |
| 22    | 55.88 | 2-           |
| 23    | 58.42 | 2-           |
| 24    | 60.96 | 2-           |
| 25    | 63.50 | 2-           |
| 26    | 66.04 | 2-           |
| 27    | 68.58 | 2-           |
| 28    | 71.12 | 2-           |
| 29    | 73.66 | 2-           |
| 30    | 76.20 | 3-           |
| 31    | 78.74 | 3-           |
| 32    | 81.28 | 3-           |
| 33    | 83.82 | 3-           |
| 34    | 86.36 | 3-           |
| 35    | 88.90 | 3-           |
| 36    | 91.44 | 3- 215 299-6 |



P.C.-BOARD HOLE-PATTERN

NOTES:

- TO DETERMINE DIMENSIONS TAKE N = NO. OF POS.  
 FOR EXAMPLE: 10 POS.: N x 2,54 = 25,4 mm.  
 FOR ORDER NO. USE BASIC NO. + NO. OF POS.  
 FOR EXAMPLE: 2 POS.= 215 299-2 (SHORTEST VERSION)  
 36 POS.= 3-215 299-6 (LONGEST VERSION)
- HOUSING MATERIAL: GREEN GLASSFILLED POLYESTER, UL 94V-0  
 CONTACT MATERIAL: PHOSPHOR BRONZE.
- PLATING: UNDERCOATING: 1,3µm Ni.  
 AT CONT.PLACE: 0,8µm Au.  
 AT SOLDER-TYNES: 3,0µm-5,0µm Sn
- MATES WITH 0,63 SQUARE/ROUND MODU POSTS.
- CONTACT-POINT.
- RECOMMENDED P.C.BOARD-THICKNESS: 1,6.
- RETENTION FEATURE.
- HV100 CONNECTOR PACKED IN ANTISTATIC BLISTER TRAY

VERWENDET FÜR  
E 92-9803

|  |  |   |              |  |                     |
|--|--|---|--------------|--|---------------------|
| THIS DRAWING IS A CONTROLLED DOCUMENT. |  | DWN   | 09.07.86     |  | <br>TE Connectivity |
|  |  | CHK   | L.V.D.HEYDEN |  |                     |
|  |  | APVD  | W.SIMONS     |  |                     |
|  |  | PRODUCT SPEC  | L.v.SOEST    |  |                     |
| DIMENSIONS: mm                         |  | TOLERANCES UNLESS OTHERWISE SPECIFIED: ±0.1mm                               |              | NAME   |                     |
|  |  | 0 PLC ± -<br>1 PLC ± -<br>2 PLC ± -<br>3 PLC ± -<br>4 PLC ± -<br>ANGLES ± - |              | HV 100 VERTICAL CONNECTOR<br>SINGLE ROW, 8,5mm HEIGHT,<br>TOP ENTRY, GOLD, MAX 36 POS. |                     |
| MATERIAL                               |  | FINISH  |              | SIZE   |                     |
| SEE NOTES                              |  | SEE NOTES   |              | CAGE CODE  |                     |
|  |  |   |              | DRAWING NO   |                     |
|  |  |   |              | RESTRICTED TO  |                     |
|  |  | WEIGHT  |              | A300779  |                     |
|  |  | CUSTOMER DRAWING  |              | C-215299   |                     |
|  |  | SCALE   |              | SHEET  |                     |
|  |  | 5:1   |              | 1 OF 1   |                     |
|  |  | REV   |              | D  |                     |