

NOTES:

1.0 ELECTRICAL SPECIFICATIONS:

1.1 FREQUENCY RANGE: DC to 26.5 GHz

1.2 MAXIMUM VSWR:

DC to 18.0 GHz: 1.12:1

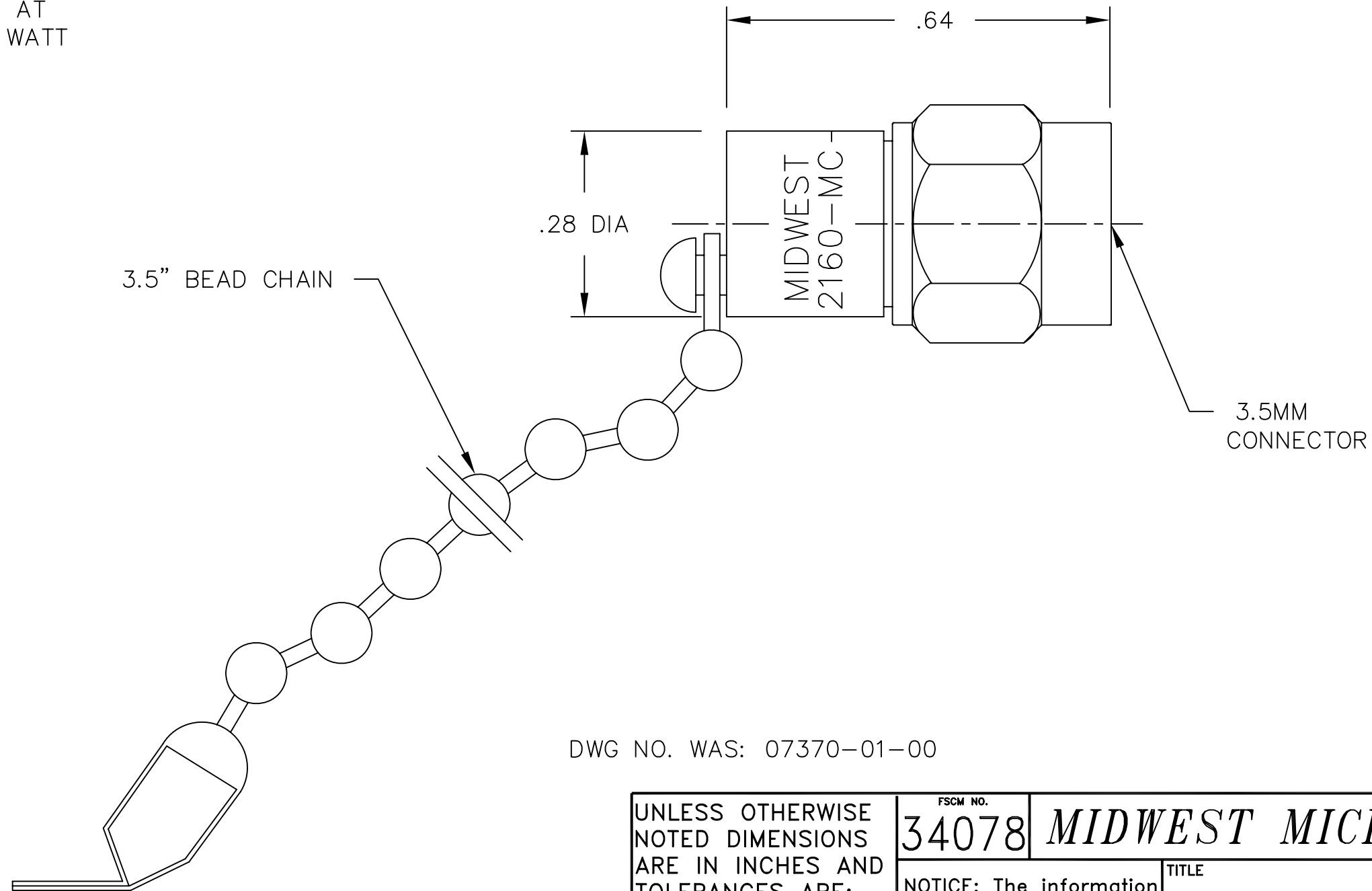
18.0 to 26.5 GHz; 1.18:1

1.3 MAXIMUM INPUT POWER: 2 WATTS AT +25°C DERATED LINEARLY TO 1 WATT AT +125°C.

1.4 OPERATING TEMP. RANGE: -65°C to +125°C

2.0 MARKING (MARK UNIT AS SHOWN):

MODEL NUMBER TRM-2160-MC-35M-02
REV. B1



DWG NO. WAS: 07370-01-00

REV.	DESCRIPTION	DATE
-	RELEASED	1/21/87
A	ECR 6545	8/1/89
B	ECN 11948 (ON CAD)	8/6/92
B1	ADDED TITLEBLOCK	11/9/05

UNLESS OTHERWISE NOTED DIMENSIONS ARE IN INCHES AND TOLERANCES ARE:		FSCM NO. 34078		MIDWEST MICROWAVE	
3 PLACE DECIMALS ±.005		NOTICE: The information contained in this drawing is proprietary and must not be used without the permission of Midwest Microwave		TITLE TERMINATION 3.5MM PLUG	
2 PLACE DECIMALS ±.02					
FRACTIONS ±1/64		DRAWN/DATE A.BEATTY 8/6/92		ENG./DATE G.KOZAK 8/7/92	
PARALLELITY: T.I.R. _____		CHECKED/DATE M.HOLLMAN 8/7/92		APPROVED/DATE	
FLATNESS: T.I.R. _____		DRAWING NUMBER TRM-2160-MC-35M-02		SCALE: 5=1	
CONCENTRICITY: T.I.R. _____		ANGLES AND PERPENDICULARITY: ±1'		SHEET 1 of 1	